



The Power of Knowledge, Digitized

Scanning Solutions for Every Library Powered by ScannX®



ScannX is the leading developer of book and document scanning solutions for libraries. For more than a decade, we built our reputation on combining powerful, state-of-the-art hardware with intuitive, easy-to-use software.

OUR MISSION

We help libraries reduce paper and toner usage with powerful technology that transforms scans into a wide range of digital formats that can then be sent and stored to devices, drives, and services. Our approachable software is easy for library patrons to use without assistance. And by reducing the need for printing, we help libraries meet their sustainability goals, as only a small fraction of scans are printed.

OUR SOLUTIONS

We partner with leading technology suppliers to package and deliver advanced scanning solutions at a broad range of price points, from entry-level book-edge and overhead scanners to the most powerful digital preservation systems. They can deliver content to a variety of digital formats for easy interlibrary sharing. We also integrate with a wide variety of payment, print management, and card systems.

OUR VALUE

Our patron-facing solutions are designed with an intuitive, touchscreen-based user interface that minimizes the need for staff assistance. For archivists and book preservation, we provide the most advanced scanning technology based on precision Zeutschel hardware. And all of these are built around a cloud infrastructure that provides significant visibility and power for administrators.

OUR PROMISE

For nine consecutive years, ScannX has been recognized by Modern Library Awards for our innovative hardware and software solutions and excellent product support. We do not take that for granted. When you buy a system from us, it is just the start of our relationship. We do everything in our power to make and keep our customers happy.

Learn more at www.ScannX.com

SCANNING SOLUTIONS FOR EVERY LIBRARY

ARCHIVAL/DIGITAL PRESERVATIONS SYSTEMS

Our partnership with Zeutschel delivers flawless, award-winning A2+ and A3+ archiving solutions that work perfectly with our unmatched document delivery software and cloud services.



EASY-TO-USE, AFFORDABLE OVERHEAD SCANNERS

Our partnership with CZUR combines innovative overhead scanning technology and hardware with our award-winning software to deliver solutions for both libraries and home users.



BOOK-EDGE SCANNERS

Our flagship, award-winning book-edge scanning systems enable easy digitization without putting any additional pressure on your book spines or delivering skewed scans.



EPSON SCANNERS

Our Epson document and photo scanners easily integrate with vending solutions, card systems, or fax services to increase both your ROI and the services you can deliver for your patrons.



ARCHIVAL/DIGITAL PRESERVATION SYSTEMS

ScannX has partnered with Zeutschel, the world leader in digitization and preservation solutions for valuable assets, to combine our unmatched document delivery software and cloud services with their A2+ and A3+ advanced book archiving solutions.

OS 15000 Comfort *Model ZOS15C* **Rugged digital preservation system with great ROI**

The Zeutschel OS 15000 Comfort delivers the durability required for high-traffic libraries and the ability to deliver flawless performance year after year. Its light source eliminates glare or hotspots, and its real-time processing ensures quick ROI by reducing archive time. Everything about this nearly indestructible A3+ scanner, with true optical 600 ppi, was designed for precision and longevity.



OS C2 *Model ZOSC2* **The most advanced scanning solution for your permanent archives**

The Zeutschel OS C2 is designed for digitization projects of all volumes and end-use needs, offering the quality and accuracy of an archival scanner with the ease-of-use of a walk-up scanner. Building on the legacy of the 12000-series, the OS C2 overhead book scanner offers enhanced quality, a smaller footprint, and advances in scanning productivity.

ARCHIVAL/DIGITAL PRESERVATION SYSTEMS (cont.)

OS 12002 Comfort *Model ZOS12C*

Exceptional scanning for archival media

The Zeutschel OS 12002 Comfort is a powerful overhead tabletop scanner designed for books, newspapers, and large-size documents up to A2+ 18"x25" scan size. It's designed to meet the demanding needs of archivists working with large media such as sheet music or artwork. It delivers exceptional-quality scans with 42-bit color scanning at 600 ppi (true optical resolution of 400 ppi) and speeds as fast as 4 sec for 400 ppi scans. Includes a manual comfort book cradle and supports books up to 4" (100 mm) thick.



OS 12002 Advanced *Model ZOS12A*

The most advanced preservation system for the most demanding tasks

The Zeutschel OS 12002 Advanced delivers all of the same performance benefits of the OS 12002 Comfort, with the significant addition of a glass plate mechanism to secure books in place and provide the flattest possible scan, with opening angle adjustable up to 90° and automatic release after scanning. With the glass plate, it can scan books up to 4" (100 mm) in thickness, or 6" (150 mm) without. Combined with advanced glare reduction technology, minimized illumination only when actively scanning, no UV radiation, and gloss mitigation to eliminate reflection, this top-of-the-line scanning system is an outstanding choice for the most demanding preservationists.

EASY-TO-USE, AFFORDABLE OVERHEAD SCANNERS

ScannX Overhead Scanner 2800V *Model OS2800VFSE*

Built on ScannX software and features V-shaped book cradle

Designed for libraries, this newest member of our product family combines CZUR M3000 Pro hardware and a V-shaped book cradle custom-integrated with the award-winning Book ScanCenter Professional Edition software™ to deliver a powerful, yet affordable, overhead scanning solution.

This leading-edge technology reduces book scanning to page turning, creates flat scans from curved books, enables glossy prints to be scanned without glare or reflection, and integrates smart tilt correction and auto-cropping. In fact, it even removes the user's thumbs from the scan area, using advanced AI technology.

As powerful as it is, this state-of-the-art scanner solution also makes it easy for everyone to use it. Small on footprint, big on value, and with improved image quality and color accuracy, the ScannX Overhead Book Scanner 2800V redefines what a scanner can deliver.



Professional Edition

ScannX Overhead Scanner 2500

Model OS2500

Professional quality at an affordable price

This powerful scanner also combines advanced powerful CZUR hardware custom-integrated with our Book ScanCenter Standard Edition software™ and our custom security stand to deliver an affordable, overhead scanning solution.



EASY-TO-USE, AFFORDABLE OVERHEAD SCANNERS (cont.)

CZUR M3000 Pro v2 *Model CM3000*

V-shaped cradle designed to handle thick and delicate books

The CZUR M3000 Pro Version 2 is both the newest member of the CZUR family and a one-stop revolutionary book scanning solution. Its 32-bit MIPS CPU enables high-speed scanning of A3-sized documents. Its 28 MP camera flawlessly captures the brilliance of your original documents. Its V-shaped cradle protects thick and delicate books. All of this in addition to all of the page flattening, finger removing, intuitive scanning for which CZUR is known.



CZUR ET25 Pro *Model CET25*

Affordable, intuitive CZUR scanning solution

The CZUR ET25 Pro revolutionizes the scanning experience by offering an advanced, intelligent, and fast overhead scanner at an affordable price. It allows you to quickly and easily digitize hundreds of pages of books, magazines, contracts, and documents. Just place the book or document on the provided scan mat and use its advanced features, including page flattening, automatic image straightening and page splitting, and quick scan speed of 1.5 seconds per page.



Home Edition

ScannX Overhead Book Scanner, Home Edition

Model CET25FHE

Designed for home office users with large book collections

The home version of the ScannX Overhead 2500 Book Scanner combines the same inspired, innovative hardware custom-integrated with the Home Edition of the award-winning Book ScanCenter software to deliver a powerful, yet affordable, solution for scanning books and documents at home. (This version does not include the security stand.)

BOOK-EDGE SCANNERS

Our book-edge systems combine an intuitive interface with a scanner that enables you to easily digitize books – at up to 600 ppi true optical resolution – without putting additional pressure on their spines or getting a skewed scan. We have two turnkey versions and three models that can be used with your existing PCs.

Book ScanCenter Elite

Model BS7145 (scanner), Model BSC6101 (PC), Model BSA3ADF (ADF)

High-volume document and book scanning for high traffic areas

The ScannX Book ScanCenter Elite is a turnkey system designed for high-volume, high-traffic areas where productivity and image quality are paramount. The state-of-the-art, book-edge unit can scan an 11" x 17" page in 200 ppi black and white in under five seconds. The system includes an 11" x 17" book-edge scanner, all-in-one touchscreen PC, and an automatic document feeder (ADF).



Book ScanCenter

Model BS7145 (scanner), Model BSC6101 (PC)

High-quality turnkey scanning for libraries of any size

The ScannX Book ScanCenter is the turnkey choice of libraries because its large friendly buttons guide the user through the scan process from choosing file formats, to scan quality, color depth, file naming, and destinations. The system includes an 11" x 17" book-edge scanner and all-in-one touchscreen PC.

BUDGET BOOK-EDGE SCANNERS

Book ScanCenter Flexi *Model BSCF7145*

Most affordable, easy-to-use, large-format book scanning for libraries

The ScannX Book ScanCenter Flexi is the industry's most affordable, easy-to-use, large format book scanning solution for library patrons and staff. Designed with large friendly buttons, its software easily guides the user through the complete scan process. (The ScannX software requires Windows 10/11 Pro installed on a PC that you provide.)



Book ScanCenter Flexi Elite

Model BSCF7145 (scanner), Model BSA3ADF (ADF)

Low-cost, high-speed self-service book scanning

The Book ScanCenter Flexi Elite is a low-cost, high-speed, easy-to-use self-service scanning system for books and documents. The Flexi Elite includes a book-edge scanner, an automatic document feeder, Scannx capture software, and the ABBYY OCR Fine Reader Engine for unmatched accuracy. (The ScannX software requires Windows 10/11 Pro installed on a PC that you provide.)

EPSON DOCUMENT SCANNERS

Epson offers a wide range of professional and home office document and photo scanners ideal for scanning documents, slides, negatives, and prints.

Epson DS-770 II Color Duplex Document Scanner *Model B11B262201* **The high-speed document scanner for easy integration in busy workgroups**

The perfect choice for heavy-use environments, the fast, efficient DS-770 II document scanner delivers high-quality scans up to 45 ppm/90 ipm. It features a robust 100-page Auto Document Feeder and a peak daily duty cycle of up to 7,000 sheets helps enhance productivity for busy workgroups.



Epson DS-530 II Color Duplex Document Scanner *Model B11B261202* **The fast, dependable color scanner for efficient document management**

The DS-530 II color duplex document scanner is the smart choice for business document management, offering fast, efficient performance. Featuring speeds up to 35 ppm/70 ipm, this powerful, compact performer offers a peak daily duty cycle of up to 4,000 sheets and advanced paper feed technologies.



WorkForce ES-400 Duplex Document Scanner *Model B11B226201* **The powerful document scanner for quick and easy organization**

Get organized fast with the WorkForce ES-400 duplex document scanner. Perfect for the home or office, this reliable, easy-to-use performer boasts speeds up to 35 ppm/70 ipm with Single-Step Technology, which captures both sides in one pass.



EPSON PHOTO SCANNERS

Epson Expression 12000XL Photo Scanner *Model 12000XL-PH*

The versatile large-format scanner for professional photographers

Featuring a high-performance Transparency Unit for slide and negative batch scanning, the Epson Expression 12000XL-PH is designed for professional photographers. Offering 2400 x 4800 dpi resolution, Micro Step Drive™ technology and a 3.8 Dmax for extraordinary image quality, this versatile scanner also supports large-format scanning up to 12.2" x 17.2".



Epson Perfection V850 Pro Photo Scanner *Model B11B224201*

The pro-quality scanner with advanced control to archive film and photos

The quality and control you need to preserve priceless originals, right in your studio – it's easy with the Epson Perfection V850 Pro scanner. You get professional-quality scans that make it simple to digitally archive virtually any original.



FastFoto FF-680W Wireless High-speed Photo Scanning System

Model B11B237201

Preserve what's priceless with the World's Fastest Personal Photo Scanner

Preserve what's priceless with the Epson® FastFoto FF-680W. Scan thousands of photos, as fast as one photo per second. Easily restore, save, organize and share photos, postcards, panoramas, and documents. The ultimate in versatility, it includes a variety of format options for quick sharing, archiving and enlargements.



VENDING SOLUTIONS

By integrating your ScannX solutions with vending solutions, they can easily pay for themselves. Our software supports multi-level pricing, which delivers customized prices based on who is scanning (staff member, student, guest) and how they are paying (cash, credit cards, or stored cards).

Cantaloupe ePort G-10S Kit *Model USATG10VP6300V*

The ePort G10-S Kit is a PCI compliant card reader and telemetry system using AT&T 4G/LTE or Verizon wireless services. It provides patron support for unattended scanners while reducing the need for staff intervention.



ITC PayStation Grand *Model ITC5400*

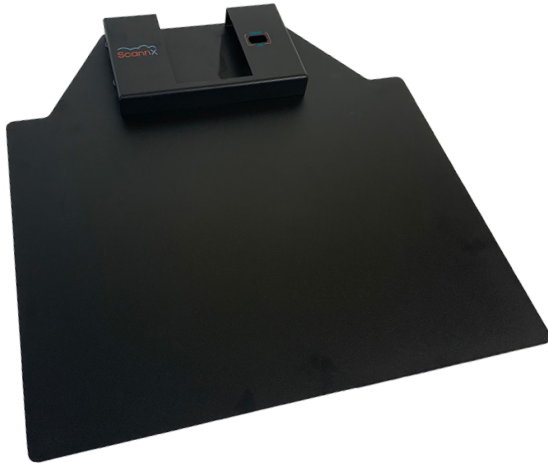
The PayStation Grand has a one-piece design to streamline setup, installation, and operation. The controller can be uniquely configured to the needs of your environment and can accept any combination of coin, bill, stored value card, or credit/debit card operation.

Jamex Coin and Bill Box 6557 *Model JPC6557*

The Jamex 6557-JPC provides a high level-interface to payment peripherals such as coin and bill acceptors and stored-value card readers. The base system consists of a main control board, an LCD display, and a power supply.



HARDWARE ACCESSORIES



Security Stand *Model ScannXSecurityStand* **Security for your CZUR-based scanner in public settings**

The Security Stand provides an essential means of securing the CZUR ET18 Pro scanner when it is used in public settings. This stand was designed exclusively by ScannX to be user-installable with four simple screws (and the included Allen wrench) onto the base of a CZUR ET18 Pro scanner.

The stand includes a matte-black metal base that replaces the scanning mat as a backdrop for scans. The base includes an integrated metal loop to secure the scanner and stand to a table to prevent its unauthorized removal. It also adds a shelf to cover manual buttons, the function for which is provided through the ScannX user interface.

Electric Height-Adjustable Table *Model FSTable4830*

This black, 48" x 30" height-adjustable table perfectly complements your ScannX scanners by enabling you to adjust your workspace to how you want it to function, whether that is a standing workstation or a seated scan hub. Just click one button and the table height will adjust to accommodate your patrons, including those with accessibility needs.



SOFTWARE & SERVICES

ScannX is the leading developer of cloud-based document scanning and delivery solutions for libraries. The company's systems provide powerful, yet extremely easy-to-use, copier-replacement solutions for scanning books, documents, and photos; and instantly store scanned content in a wide range of digital options. ScannX reduces operating costs, makes printed information instantly accessible, and expands the range of services libraries can offer their patrons.

ScannX Book ScanCenter®

The cornerstone of the ScannX value is our intuitive scanning software that helps your patrons and staff members reduce printing by up to 96 percent – saving paper, toner costs, and trees.

The software uses an intuitive touchscreen interface to easily guide users through the scanning process. What they don't see is the software scanning one page while it OCRs the previous page and automatically crops, straightens, and orients the images being scanned.

Once the content is scanned, then your options really open up. Your scans can be converted into multiple document formats including PDF, Word, and MP3, or image formats like JPEG, TIFF, and PNG. To avoid printing as a default, those files can easily be emailed, transferred to mobile devices, sent to cloud or networked drives, or copied onto USB drives.

ScannX also takes the security of your users' personal data seriously by not saving either their scanned content or their email addresses after they finish their session. We also provide advanced security options with CAS and 2-Factor Authentication.



Software as a Service

In addition to all of the features available with our base-level software, you can enhance your system with the following SaaS options:

- Fax – Send scans as faxes without requiring a phone line
- Digital Translation – Scans and automatically translates text into one of 100+ languages
- Handwriting Recognition – Immediately transforms handwritten content to editable text

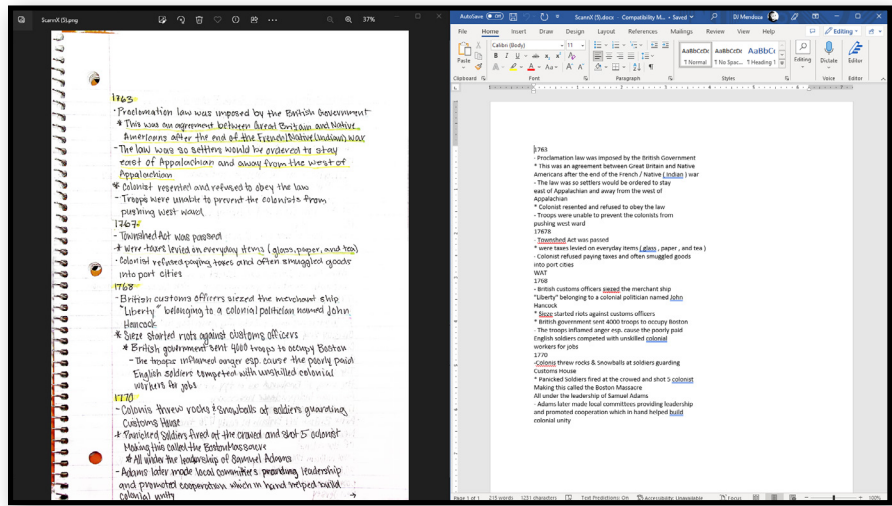
SCANNALYTICS CLOUD SERVICES

ScannX Cognitive Services

ScannX Cognitive Services brings the power of AI-based handwriting recognition and translation services to users of any skill level. This upgrade leverages Microsoft Azure cloud computing to deliver these innovative new capabilities. This expansion of ScannX Cloud Services helps users accelerate research and expand collaboration, and provides new methods of learning for library patrons and staff.

Artificial Intelligence widens the concept of a scanner to a system that can see, search, understand, and speak. For example, a user could convert a handwritten document into text, then translate it into one of 100+ other languages, and then output it to a vast number of formats and devices, including MP3 audio files.

ScannX Cognitive Services features prominently in the intuitive, award-winning ScannX Book ScanCenter software. For easy user access, both handwriting recognition and translation are located on the system's destination selection screen.



ORIGINAL

CONVERTED WORD DOCUMENT*

*Spelling errors highlighted in red underlines when opened in Microsoft Word with Spell checker turned on.

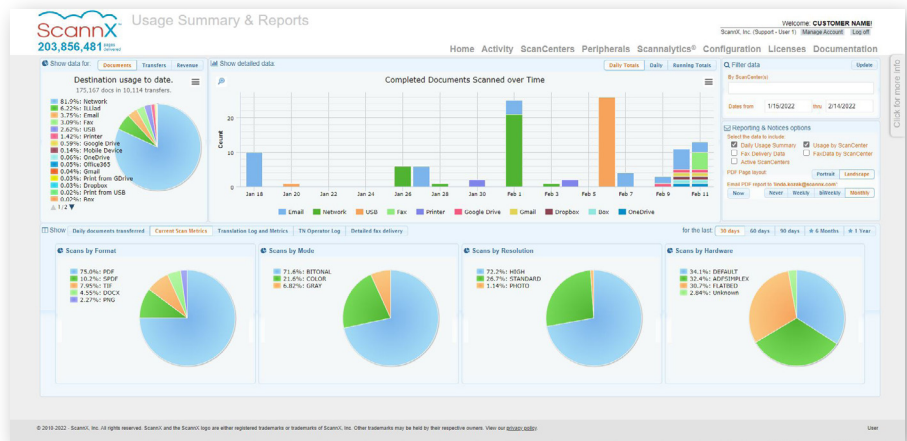
Scannalytics®

Scannalytics is a widely-used part of ScannX Cloud Services that provides library administrators with performance data for all installed scanning systems. Activity reports provide insights on how and when systems are being used.

You can drill down into that data and discover hourly usage statistics for either all systems or an individual unit, across both the present or prior week. This raw activity data can also be shaped into regular reports to capture trends and monitor system ROI.

The system also can help administrators monitor system-wise vending revenues, ensure all units have active warranties and preventive maintenance thresholds, and project where units might be better redeployed to determine where activity is higher to potentially redeploy systems where they are in greater demand.

USAGE SUMMARY REPORT



AWARDS & RECOGNITION

Modern Library Awards

The MLAs are an annual unbiased program recognizing elite products and services for the library community. ScannX has been honored to win in consecutive years, after being reviewed positively by the LibraryWorks readership, and more than 80,000 librarians in public, academic, K-12, and special libraries. In 2023, ScannX was honored with a Platinum Award for its Book ScanCenter book-edge product line, Platinum Awards for its Zeutschel OS 15000 Comfort and Zeutschel OS 16000 Comfort overhead scanners, and an honorable mention for the ScannX Overhead Book Scanner.



"ScannX clearly knows how to keep both its existing and new customers happy by delivering exceptional book scanners consistently for nearly a decade. Its flagship book scanners continue to land our highest awards, and its new overhead scanners even score honorable mentions as soon as they enter the market and begin building an audience. None of this happens by accident. ScannX knows how to deliver and it shows!" - **Jenny Newman, publisher and MLA program manager**

Here is what the MLA librarian judges had to say about ScannX...

Zeutschel OS 15000

"As a patron-facing scanner, the OS 15000 is unparalleled. The scanner is easy to use, incorporates OCR during the scan process, removes thumbs and other extraneous content on the fly, and is very easy for patrons to figure out. The support is also amazing - we usually can have most issues addressed within one day through remote support."

Zeutschel OS 16000

"This scanner was purchased to scan a specific grant project which consists of oversized books that barely fit in the max range of the scanners surface. Although there have been a few quirks between the software and hardware, this machine performs amazingly good. The company that sold the machine performed a custom build for us as we did not need the glass top for our application. The company's support team has had a service rep. answer our questions and repair small issues almost immediately. I would not hesitate to purchase this scanner over again."

ScannX Book ScanCenter

"It totally transformed the scanning services our library provides from what we had previously. If we had the need to buy 5 more, I would without question."

ScannX Overhead Book Scanner

"This scanner has been used in our Archive department, because it's able to scan large items with high resolution. The tech support and customer service have been great to work with!"

PRODUCT COMPARISONS

Book-edge Scanners

	Book ScanCenter Elite	Book ScanCenter	Book ScanCenter Flexi Elite	Book ScanCenter Flexi
INCLUDES:				
Book-edge scanner	Y	Y	Y	Y
PC	Y	Y	N	N
ADF	Y	N	Y	N
Scan Area	11.8" x 17"	11.8" x 17"	11.8" x 17"	11.8" x 17"
Optical Resolution	600 ppi	600 ppi	600 ppi	600 ppi
Speed	6.3 seconds	6.3 seconds	6.3 seconds	6.3 seconds
Output Resolution	150 to 600 dpi	150 to 600 dpi	150 to 600 dpi	150 to 600 dpi
Color (input)	48 bit	48 bit	48 bit	48 bit
Color (output)	24 bit	24 bit	24 bit	24 bit
Grayscale (input)	16 bit	16 bit	16 bit	16 bit
Grayscale (output)	8 bit	8 bit	8 bit	8 bit
Technology	CCD	CCD	CCD	CCD
Light Source	LED	LED	LED	LED
ScannX Software	Y	Y	Y	Y
ScannX Cloud Services	Y	Y	Y	Y

PRODUCT COMPARISONS

Archival/Preservation Scanners

	OS C2	OS 15000 Comfort	OS 12002 Advanced/ Comfort
Type	Overhead	Overhead	Overhead
Scan Area	25" x 18.1"	18" x 14"	25" x 18.1"
Optical Resolution	600 ppi	600 ppi	400 ppi
Speed	3.8 seconds	3.8 seconds	3.8 seconds
Output Resolution	75 to 600 dpi	75 to 600 dpi	75 to 600 dpi
Color (input)	42 bit	42 bit	42 bit
Color (output)	24 bit	24 bit	24 bit
Grayscale (input)	14 bit	14 bit	14 bit
Grayscale (output)	8 bit	8 bit	8 bit
ScannX Software	Y	Y	N
ScannX Cloud Services	Y	Y	N
PC Included?	Available as option	Available as option	Available as option

PRODUCT COMPARISONS

Overhead Scanners

	ScannX Overhead Book Scanner
Type	Overhead
Scan Area	11" x 17"
Optical Resolution	330 ppi
Output Resolution	75 to 600 dpi
Color (input)	24 bit
Color (output)	24 bit
Grayscale (input)	8 bit
Grayscale (output)	8 bit
Speed	6.0 seconds/page
Technology	CMOS
Light Source	LED
ScannX Software	Y
ScannX Cloud Services	Y
PC Included?	Available as option

Document Scanners

Fujitsu Document Scanner fi-7160	Xerox DocuMate 6440
Sheet-fed	Sheet-fed
8.5" x 11.69"	8.5" x 118"
600 ppi	600 ppi
150 to 600 dpi	150 to 600 dpi
24 bit	24 bit
24 bit	24 bit
8 bit	8 bit
8 bit	8 bit
5.3 seconds/page	6.5 seconds/page
CCD	CCD
LED	LED
Y	Y
Y	Y
Available as option	Available as option